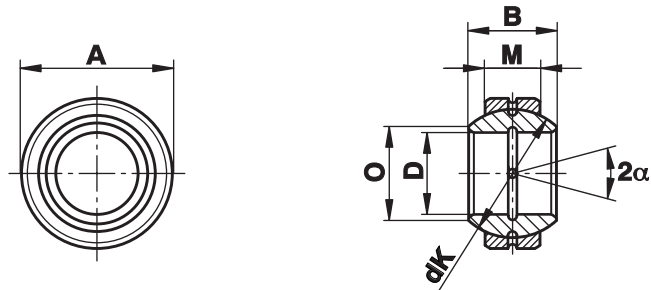


Bạc cầu Series G - Hoàn toàn bằng thép

Series GE...FO (-2RS)

Bạc cầu bằng thép series G loại DIN ISO 12240-1. gia công bằng molybdenum disulphide mos₂, tự bôi trơn

Sử dụng với các góc xoay cao hơn



| Kích cỡ (D) | B | M | A | O | dK | Tải trọng tĩnh C ₀ kN | Tải trọng động C _k kN | Góc xoay tối đa Angle α (°) | Trọng lượng (g) |
|------------------------------------|-----|-----|-----------------------|-------|-------|----------------------------------|----------------------------------|-----------------------------|-----------------|
| 4 ¹⁾ _{-0,008} | 7 | 4 | 14 _{-0,008} | 7,1 | 10,0 | 17,0 | 3,4 | 20 | 5 |
| 5 ¹⁾ _{-0,008} | 9 | 5 | 16 _{-0,008} | 9,3 | 13,0 | 27,0 | 5,5 | 21 | 8 |
| 6 ¹⁾ _{-0,008} | 9 | 5 | 16 _{-0,008} | 9,3 | 13,0 | 27,5 | 5,5 | 21 | 8 |
| 8 ¹⁾ _{-0,008} | 11 | 6 | 19 _{-0,009} | 11,6 | 16,0 | 40,5 | 8,1 | 21 | 14 |
| 10 ¹⁾ _{-0,008} | 12 | 7 | 22 _{-0,009} | 13,4 | 18,0 | 54,0 | 10,8 | 18 | 21 |
| 12 ¹⁾ _{-0,008} | 15 | 9 | 26 _{-0,009} | 16,0 | 22,0 | 85,0 | 17,0 | 18 | 36 |
| 15 _{-0,008} | 16 | 10 | 30 _{-0,009} | 19,2 | 25,0 | 106,0 | 21,2 | 16 | 48 |
| 17 _{-0,008} | 20 | 12 | 35 _{-0,011} | 21,0 | 29,0 | 146,0 | 30,0 | 19 | 80 |
| 20 _{-0,010} | 25 | 16 | 42 _{-0,011} | 25,2 | 35,5 | 240,0 | 48,0 | 17 | 152 |
| 25 _{-0,010} | 28 | 18 | 47 _{-0,011} | 29,5 | 40,7 | 310,0 | 62,0 | 17 | 199 |
| 30 _{-0,010} | 32 | 20 | 55 _{-0,013} | 34,4 | 47,0 | 400,0 | 80,0 | 17 | 296 |
| 35 _{-0,012} | 35 | 22 | 62 _{-0,013} | 39,7 | 53,0 | 500,0 | 100,0 | 16 | 402 |
| 40 _{-0,012} | 40 | 25 | 68 _{-0,013} | 44,7 | 60,0 | 640,0 | 127,0 | 17 | 535 |
| 45 _{-0,012} | 43 | 28 | 75 _{-0,013} | 50,0 | 66,0 | 780,0 | 156,0 | 15 | 698 |
| 50 _{-0,012} | 56 | 36 | 90 _{-0,015} | 57,1 | 80,0 | 1220,0 | 245,0 | 17 | 1420 |
| 60 _{-0,015} | 63 | 40 | 105 _{-0,015} | 67,0 | 92,0 | 1560,0 | 315,0 | 17 | 2090 |
| 70 _{-0,015} | 70 | 45 | 120 _{-0,015} | 78,2 | 105,0 | 2000,0 | 400,0 | 16 | 3010 |
| 80 _{-0,015} | 75 | 50 | 130 _{-0,018} | 87,1 | 115,0 | 2450,0 | 490,0 | 14 | 3610 |
| 90 _{-0,020} | 85 | 55 | 150 _{-0,018} | 98,3 | 130,0 | 3050,0 | 610,0 | 15 | 5500 |
| 100 _{-0,020} | 85 | 55 | 160 _{-0,025} | 111,2 | 140,0 | 3250,0 | 655,0 | 14 | 6040 |
| 110 _{-0,020} | 100 | 70 | 180 _{-0,025} | 124,8 | 160,0 | 4750,0 | 950,0 | 12 | 9740 |
| 120 _{-0,020} | 115 | 70 | 210 _{-0,030} | 138,4 | 180,0 | 5400,0 | 1080,0 | 16 | 15100 |
| 140 _{-0,025} | 130 | 80 | 230 _{-0,030} | 151,9 | 200,0 | 6800,0 | 1370,0 | 16 | 18900 |
| 160 _{-0,025} | 135 | 80 | 260 _{-0,035} | 180,0 | 225,0 | 7650,0 | 1530,0 | 16 | 24800 |
| 180 _{-0,025} | 155 | 100 | 290 _{-0,035} | 196,1 | 250,0 | 10600,0 | 2120,0 | 14 | 35900 |
| 200 _{-0,030} | 165 | 100 | 320 _{-0,040} | 220,0 | 275,0 | 11600,0 | 2320,0 | 15 | 44900 |
| 220 _{-0,030} | 175 | 100 | 340 _{-0,040} | 243,6 | 300,0 | 12700,0 | 2550,0 | 16 | 50900 |
| 240 _{-0,030} | 190 | 110 | 370 _{-0,040} | 263,6 | 325,0 | 15300,0 | 3050,0 | 15 | 65300 |
| 260 _{-0,035} | 205 | 120 | 400 _{-0,040} | 283,6 | 350,0 | 18000,0 | 3550,0 | 15 | 82000 |
| 280 _{-0,035} ⁰ | 210 | 120 | 430 _{-0,045} | 310,6 | 375,0 | 19000,0 | 3800,0 | 15 | 96600 |

Chất liệu:

Lõi:

Thép chịu lực 100Cr6, Aisi 52100, cứng, sơn nền, phốt phát hóa gia công bằng molybdenum disulphide từ kích cỡ 15 có sẵn loại có phốt làm kín (-2RS)

¹⁾ không có lỗ bôi trơn

Vòng bi:

Thép chịu lực 100Cr6, Aisi 52100, cứng, sơn nền, phốt phát hóa gia công bằng molybdenum disulphide