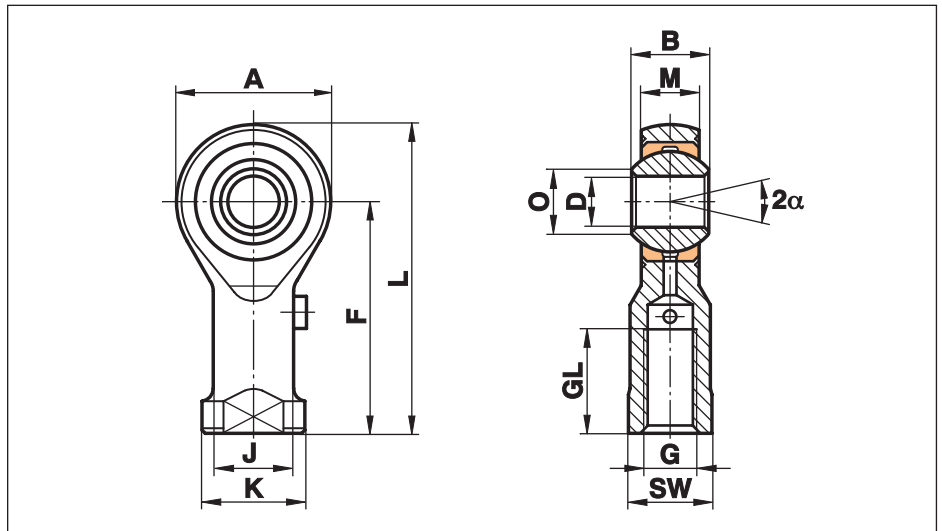


# Rod Ends Series K - yêu cầu bảo trì

## Series GIS

Rod End với ren vít trong nối với vú mỡ ở vỏ ngoài

Đặc biệt phù hợp với ứng dụng tốc độ cao



Kích cỡ (D H7)	B	M	A	F	L	K	J	O	SW	G	GL	Tải trọng tĩnh C <sub>0</sub> kN	Tải trọng động CkN	Tốc độ rev/phút	Góc xoay tối đa Angle α (°)	Trọng lượng(g)
2 <sup>1)</sup>	4,5	3,60	9	16	20,5	4,5	3,8	2,6	4,0	M 2	7	3,0	1,1		16	3
3 <sup>1)</sup>	6,0	4,50	14	21	27,0	6,5	5,0	5,1	5,5	M 3	10	4,1	1,8		14	6
5	8,0	6,00	18	27	36,0	11,0	9,0	7,7	9,0	M 5	10	8,0	3,3	1200	13	18
6	9,0	6,75	20	30	40,0	13,0	10,0	8,9	11,0	M 6	12	8,9	4,3	1500	13	27
8	12,0	9,00	24	36	48,0	16,0	12,5	10,4	13,0	M 8	16	14,1	7,1	1200	14	46
10	14,0	10,50	28	43	57,0	19,0	15,0	12,9	17,0	M 10	20	19,3	10,0	1000	13	76
12	16,0	12,00	32	50	66,0	22,0	17,5	15,4	19,0	M 12	22	23,5	13,5	860	13	115
14	19,0	13,50	36	57	75,0	25,0	20,0	16,8	22,0	M 14	25	21,0	17,0	750	16	170
16	21,0	15,00	42	64	85,0	27,0	22,0	19,3	22,0	M 16	28	32,0	21,5	660	15	230
18	23,0	16,50	46	71	94,0	31,0	25,0	21,8	27,0	M 18x1,5	32	38,5	26,0	600	15	320
20	25,0	18,00	50	77	102,0	34,0	27,5	24,3	32,0	M 20x1,5	33	44,0	31,5	540	14	415
22	28,0	20,00	54	84	111,0	37,0	30,0	25,8	32,0	M 22x1,5	37	53,0	38,0	500	15	540
25	31,0	22,00	60	94	124,0	42,0	33,5	29,6	36,0	M 24x2	42	62,0	47,0	440	15	750
30	37,0	25,00	70	110	145,0	51,0	40,0	34,8	41,0	M 30x2	51	82,0	64,0	370	17	1130
35	43,0	28,00	80	125	165,0	58,0	46,0	37,7	50,0	M 36x2	56	101,0	80,0	330	19	1600
40	49,0	35,00	90	142	187,0	69,0	57,0	44,2	60,0	M 42x2	60	124,0	116,0	290	16	2770
50	60,0	45,0	116	160	218,0	78,0	65,0	55,9	65,0	M 48x2	65	308,0	185,0	230	14	5000

### Chất liệu:

Từ kích cỡ 12 chuyển sang thép cắt mạ kẽm 9SMnPb28K, từ kích cỡ 14 được rèn từ thép nhiệt luyện C22, mạ kẽm M1023

### Vỏ:

Kích cỡ 50 được rèn từ thép nhiệt luyện C45 mạ kẽm

### Lõi:

Đồng có độ bền cao CuSn8

### Vòng bi:

Thép chịu lực 100Cr6, Aisi 52100, cứng, sơn nền, đánh bóng

Seri này có loại kín (xem trang 52) hoặc bu lông có ren (xem trang 53).

Đầu nối Cetop xem trang 54.

1) Không có lỗ bôi trơn